



## Fields are Variable

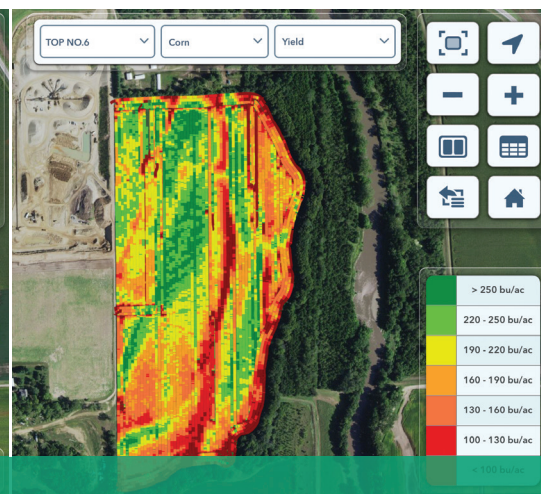
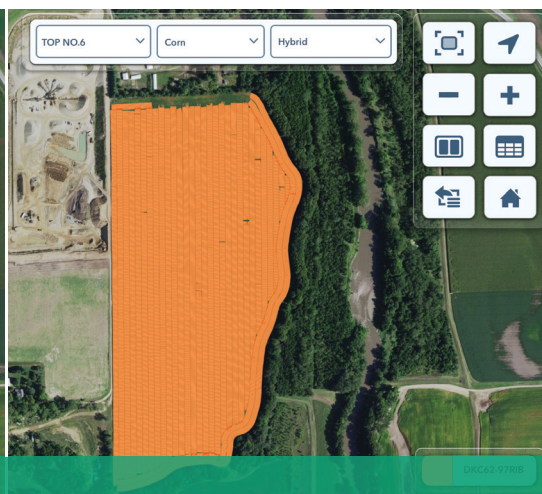
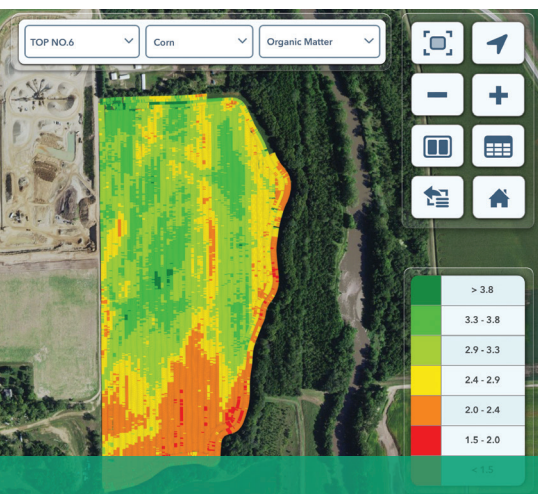
Most growers believe that their fields have some variation in them, however manage their fields the same from road ditch to fence. The many areas contained within those acres have widely varying levels of profit potential. Profitability is compromised when the entire field is treated the same rather than treating each variation in a way that maximizes its return.

## Different Genetics Provide Different Results

Selecting the correct hybrid or variety for each field is one of the most impactful decisions that is made when planning for the growing season. The rolling timber field isn't planted with the same hybrid and population as the black river bottom ground or the sand knob. But what about when the rolling timber soil, black river bottom ground, and sand knob are all in the same pass of the same field? The hybrid that maximizes the best part of the field is typically selected, and the rest of the field is left to chance. Look at the variability in organic matter in the field below. Averaging the field by planting a single hybrid is leading to overspending on seed in the areas that are not capable of producing much.

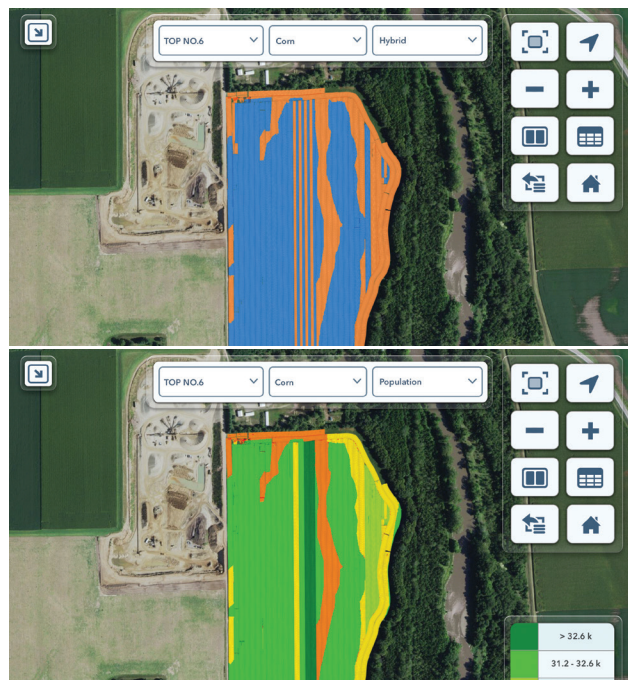
## Multi-Hybrid Planting with Speed

mSet allows for two hybrids to be planted in the field as the planter switches between hybrids when crossing into different zones. A single meter with a dual compartment hopper and a seed selector makes it simple. The seed selector fills the meter with a small pool of the hybrid you are planting, and when it's time to plant the other hybrid, it fills the meter with the other hybrid from the other section of the hopper. Transitions happen quickly thanks to a seed pool level sensor that tells the seed selector when more seed is needed. There are also no compromises. mSet is compatible with both seed tubes as well as SpeedTube® for maximizing acres per hour and gaining profitability from multi-hybrid planting.



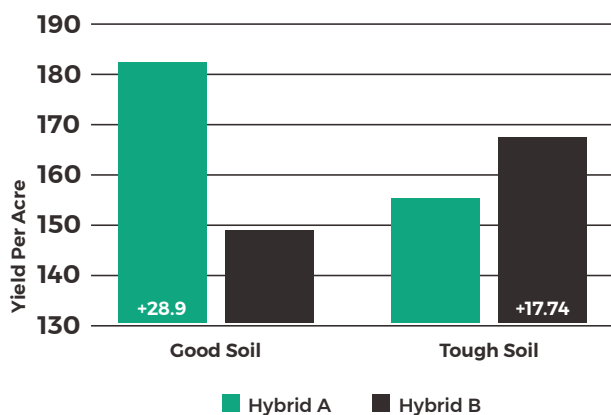
# See The Difference

In this field, there are timber soils along the tree-line, as well as some gravel veins that run through the middle of the field. For years this field has seen reduced profit potential from being planted to a single hybrid.



See how mSet was utilized to plant the best hybrid for these different areas of the field.

## Multi-Genetic 2016 Study



# Build for the Future

The Precision Planting vSet<sup>®</sup> meter and mSet<sup>™</sup> multi-hybrid system allow you to build the system you will utilize now and in the future. If today you decide to add vSet to your planter with mini hoppers for a single hybrid and then in the future add the mSet seed selector, you use the hopper you already have. If you want to move from mini hoppers to a 1.6 bushel single hybrid or dual hybrid hopper, you simply add on to your existing mini hopper. A purchase today is an investment in your planter for the long term, without needing to switch out hoppers with each additional upgrade. Simply build upon the current hopper you have on your planter.



Learn more at [precisionplanting.com](https://precisionplanting.com)

 Precision Planting<sup>®</sup>

mSet<sup>™</sup> is a trademark and SpeedTube<sup>®</sup>, vSet<sup>®</sup> and Precision Planting<sup>®</sup> are registered trademarks of Precision Planting LLC. Maps shown using Climate FieldView<sup>™</sup>. All other trademarks are the property of their respective owners. ©2018 Precision Planting LLC.